

Aluminum construction formwork service process

Chapter 1 Overview of the service process	1
Chapter 2 Customer Requirements Communication and Confirmation	2
2.1 Customer demand research and analysis	2
2.2 Service program development and validation	3
Chapter 3 Aluminum Formwork Design and Production	4
3.1 Design Development and Optimization	4
3.2 Aluminum formwork production and quality control	5
Chapter 4 Aluminum formwork site installation and commissioning	6
4.1 Pre-installation preparations	6
4.2 On-site installation and commissioning process	6
Chapter 5 After-sales service and technical support	8
5.1 After-sales service commitment and process	8
5.2 Technical support and training	8

Aluminum construction formwork service process

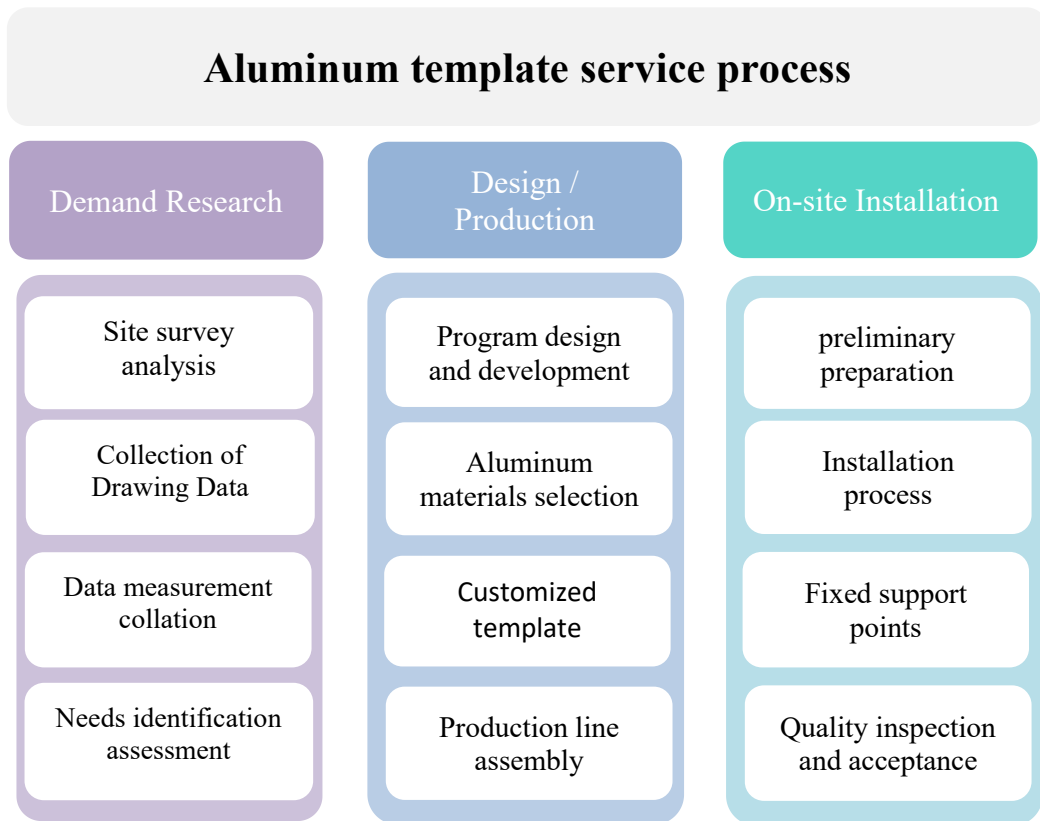
Chapter 1 Overview of the service process

The service process of architectural aluminum formwork is a comprehensive and fine service system, which begins with in-depth understanding and analysis of customers' needs, followed by professional design, efficient production, precise installation, and supplemented by considerate after-sales service, aiming to provide customers with all-around, one-stop aluminum formwork solutions from the early stage to the late stage.

In the demand stage, the service team will communicate with the customer to fully understand the customer's specific needs, project characteristics and expected goals, so as to develop a preliminary program that meets the customer's expectations. Then, in the design and production process, the professional design team will carefully design a structurally stable and convenient aluminum formwork solution based on the customer's needs and the actual situation of the project, and organize the production team to carry out high-precision and high-quality aluminum formwork production in accordance with the design drawings.

In the installation stage, the professional installation team is equipped with advanced installation equipment and technology, and carries out the aluminum template installation and construction in strict accordance with the design scheme. Through scientific and reasonable installation process and rigorous quality control measures, to ensure that the construction quality of aluminum template project meets the expected standards.

In terms of after-sales service, the construction aluminum template service process pays particular attention to customer feedback and satisfaction. Provide professional after-sales support team, ready to solve all kinds of problems encountered by customers in the process of use, and commitment to timely response, rapid treatment of all kinds of after-sales problems, is committed to improving customer satisfaction, to ensure the smooth operation of the project.



Aluminum formwork customization service flow chart

Chapter 2 Customer Requirements Communication and Confirmation

2.1 Customer demand research and analysis

The starting point of the service process is an in-depth understanding of the customer's needs. We use a variety of means to conduct demand research, including but not limited to site survey, drawing analysis, customer interviews, etc.. Through these means, we are able to accurately grasp the scale of the project, structural characteristics, schedule requirements and other key information. Subsequently, the collected data are analyzed comprehensively to clarify the customer's specific needs for aluminum formwork, such as the size of the formwork, material requirements,

load-bearing capacity, etc., which provides a solid data basis for subsequent design and production.

We are well aware that every project has its uniqueness, so we always maintain close communication with our customers to ensure that we can accurately understand their needs. Through our professional site investigation team, we have a detailed understanding of the construction site, examining factors such as the site environment, the structural characteristics of the project and the construction conditions, all of which provide important references for the subsequent aluminum formwork design.

In order to further ensure the comprehensiveness and accuracy of information collection, we will use advanced architectural design software to analyze the project drawings in depth, from which we extract key building dimensions, structural loads and other data information. At the same time, we also arrange professional sales and technical teams to conduct face-to-face in-depth interviews with clients to understand their project background, specific needs and expectations in detail.

On this basis, we conduct a comprehensive analysis of all the information collected, and refine the customer's specific needs for aluminum formwork, such as the precise dimensions of the formwork, the standard of the materials used, and the requirements for the load-bearing capacity, durability, recyclability and other aspects of the formwork. These detailed data and indicators not only provide strong data support for the subsequent design and production of aluminum templates, but also lay a solid foundation for us to provide customized and professional services for our customers.

2.2 Service program development and validation

Based on the results of the demand analysis, we have developed a set of detailed service program. The plan not only contains the design and production plan of aluminum formwork, but also covers the specific arrangements for installation, commissioning and after-sales service. After the formulation of the program, we will carry out in-depth communication and discussion with the customer to ensure that each item in the program meets the expectations and requirements of the customer. After repeated communication and revision, we finally reach a consensus on the service program, laying a solid foundation for the smooth implementation of the subsequent work.

In order to meet customers' high requirements for project efficiency and quality, we carefully plan the design details and production process of aluminum formwork with our rich industry experience and technical strength. According to the project scale and schedule requirements, we formulate scientific and reasonable production plan and logistics distribution program to ensure that the formwork can be accurately delivered to the construction site within the specified time; in the installation process, we provide professional installation guidance and technical support to ensure that the formwork installation is accurate; in terms of after-sales service, we have set up a 24-hour on-line customer service system, to provide timely question and answer and complaint handling After-sales service, we set up a 24-hour online customer service system to provide timely answers to questions and complaints.

During the whole process of service program development, we always maintain close communication with customers. Through regular project coordination meetings and information feedback exchanges, we keep abreast of the latest needs and feedback from our customers to ensure that our service solutions can be continuously optimized and improved. This high degree of interaction and cooperation makes our service program more targeted and operable, thus providing a strong guarantee for the smooth progress of the project.

Chapter 3 Aluminum Formwork Design and Production

3.1 Design Development and Optimization

The design scheme is a key link in the service process of aluminum formwork, which directly affects the use effect of aluminum formwork and the quality of the project. The company's professional design team, team members according to the specific requirements of the service program, combined with the actual situation of the project, from the structural safety, stability, durability and ease of construction and other dimensions of comprehensive consideration, the use of advanced design software to carry out accurate aluminum template design.

When drawing the aluminum formwork design drawings, the team will strictly follow the design specifications and standards to ensure the accuracy and

reasonableness of the drawings. After the design drawings are completed, the design team will also carry out several internal audits and optimization, and constantly refine and improve the design scheme to ensure that the design scheme is scientific, reasonable and economical. At the same time, we encourage customers to participate in the discussion and optimization of the design scheme, through in-depth communication with customers to understand their needs and expectations, and work together to create aluminum templates to meet the needs of the project.

3.2 Aluminum formwork production and quality control

After the design scheme is determined, it enters the production stage of aluminum formwork. In the production stage, there are advanced production equipments and production lines, including CNC machine tools, precision cutting machines, automatic welding machines, etc., which can efficiently and accurately produce aluminum templates in line with the design requirements. These equipments not only ensure the precision and quality of aluminum formwork, but also greatly improve the production efficiency. During the production process, we strictly abide by the ISO9001 quality management system, and strictly control every link from the procurement of raw materials.

The company will choose high-quality aluminum alloy material as the main raw material of the formwork to ensure that it has sufficient strength, rigidity and durability. During the production process, semi-finished products will be inspected and tested several times to ensure that they meet the design requirements and national standards. In addition, after the production is completed, a comprehensive quality inspection and acceptance procedure will be carried out on the finished products to ensure that the quality of the aluminum formwork meets the national standards and customer requirements. In order to further ensure the quality and performance of the aluminum formwork, the aluminum formwork produced will also be subjected to strict performance tests. These tests include load-bearing tests, deformation tests, etc., which are designed to simulate the use of the aluminum formwork under actual construction conditions to ensure the safety and reliability of the aluminum formwork in actual use.

Chapter 4 Aluminum formwork site installation and commissioning

4.1 Pre-installation preparations

Before the aluminum formwork arrives at the construction site, we will do all the preparatory work before installation in advance. Specifically, this includes systematic training for all personnel involved in the installation to ensure that they are familiar with the characteristics of the aluminum formwork and the correct installation method; preparing all the necessary installation tools, such as cranes, wrenches, screwdrivers, etc., and making sure that these tools can work properly during the installation process; and thoroughly cleaning and marking the installation area. We will carry out in-depth communication and coordination with the construction team to clarify the installation process, time nodes and division of responsibilities.

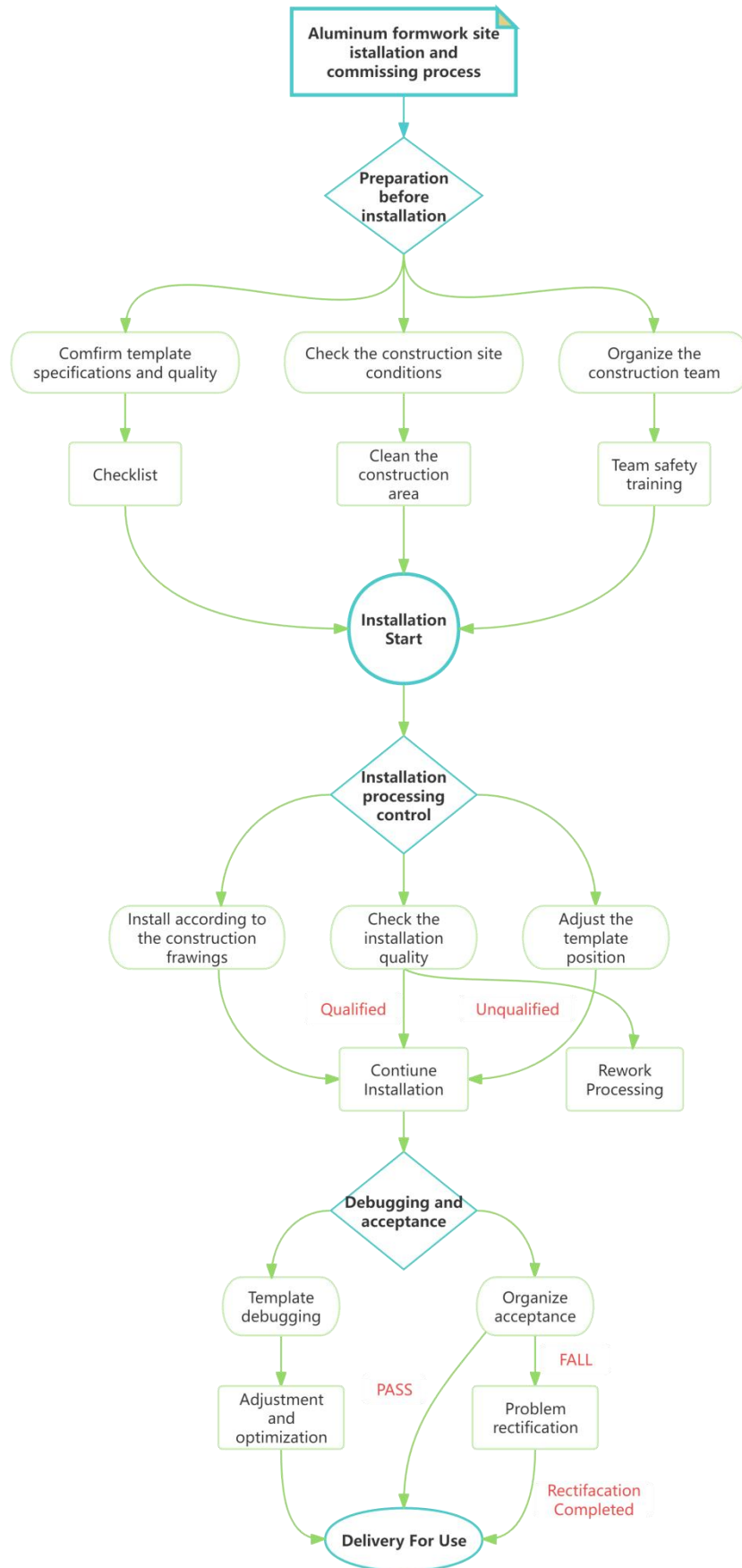
In this way, we can ensure that the installation of aluminum formwork is carried out in an orderly and efficient environment, laying a solid foundation for the successful completion of the project.

4.2 On-site installation and commissioning process

Our installation team has rich experience and expertise in the on-site installation and commissioning process of aluminum formwork. Team members operate in strict accordance with the design drawings and installation program to ensure that each formwork is accurately and firmly installed in place.

During the installation process, our installation team will strictly check and adjust the splicing, fixing and supporting of the formwork. These checks and adjustments include using specialized equipment to measure and calibrate the flatness, perpendicularity and overall stability of the formwork to ensure that the formwork system meets the design requirements and is safe and reliable.

After installation, we will carry out comprehensive commissioning and testing. These tests include checking the overall performance of the formwork system and the synergy between the components to ensure that the formwork works properly and reliably during the actual pouring process.



Aluminum formwork installation and commissioning process

Chapter 5 After-sales service and technical support

5.1 After-sales service commitment and process

We fully realize that after-sales service is not only an extension of product quality, but also a reflection of enterprise reputation and customer satisfaction. Therefore, we solemnly promise to provide customers with all-round, efficient and convenient after-sales service support. This includes, but is not limited to, regular return visits and inspections, rapid repair and replacement services, professional technical advice and guidance. When customers encounter any problems during the use of aluminum formwork, our customer service team will respond at the first time and send professional and experienced technicians to the scene to deal with them.

In order to ensure that the after-sales service can be carried out efficiently and accurately, we have also established a perfect after-sales service process and system. Firstly, we will set up a special after-sales service hotline to ensure that every customer's demand can be accurately recorded and quickly communicated to the relevant departments; secondly, we have set up a rapid response mechanism to ensure that a professional team can be dispatched to the scene to carry out repairs or replacements within a short period of time upon receipt of a customer's request; furthermore, we have implemented a full tracking management system, which includes dedicated personnel responsible for every step of the process, from the discovery of problems to the assignment of tasks to the completion of repairs. In addition, we implement full tracking management, from problem discovery, task assignment to maintenance completion, each link has a person in charge to ensure that the entire after-sales service process is carried out smoothly; finally, we will regularly evaluate and summarize the after-sales service, adjust and optimize the service process according to customer feedback and market changes, and strive to let each customer enjoy an after-sales service experience that exceeds expectations.

5.2 Technical support and training

In addition to the perfect after-sales service system, we are also committed to providing customers with professional technical support and training services. We know that the use of aluminum formwork involves many links and technical details,

so we have a professional technical support team composed of industry experts and technical elites. This team is not only familiar with the basic principles, operation procedures and common problems of aluminum formwork, but also can provide personalized solutions and technical guidance for different project needs. They are always on standby to provide customers with immediate help and support by phone, email or remote assistance, ensuring that customers can give full play to their performance advantages in the process of using aluminum formwork and avoiding unnecessary losses and waste.

In addition, we also attach great importance to the long-term development and cooperation of our customers, and pay special attention to improving their self-service ability through training and communication. We regularly hold professional training courses and seminars on the use of aluminum formwork, maintenance and related supporting technologies, and invite customers and their technicians to actively participate. These activities are aimed at helping customers gradually master the operation skills and management methods of aluminum formwork from basic to advanced, so as to improve work efficiency and ensure project quality in actual construction, and maximize the energy-saving, environmental protection and recycling advantages of aluminum formwork.

To sum up, the service process of aluminum template for construction is an all-round service system covering demand research, design and production, installation and commissioning to after-sale support. We always adhere to the customer-centered service concept, focusing on the improvement of service quality and the satisfaction of customer needs. In the future development, we will continue to optimize the service process, improve the service quality and innovate the service mode to provide more customers with more high-quality and efficient aluminum template services.